

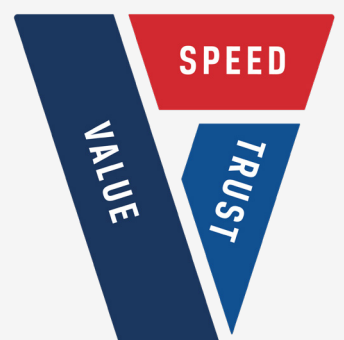


# Local Information

*including Hotels, Restaurants, Shopping,  
Local Attractions and Car Hire information*



**Port Melbourne**





# Contents

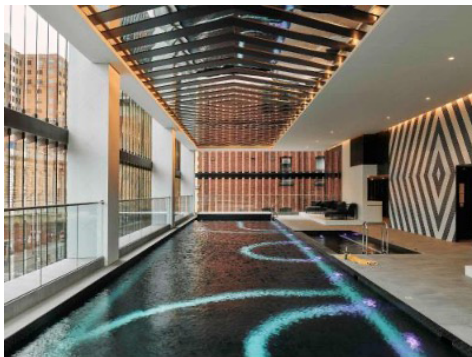
Hotels .....	Page 2
Restaurants .....	Page 4
Shopping .....	Page 7
Local Attractions .....	Page 8
Car Hire Information .....	Page 9

# Hotels

## Movenpick Hotel Melbourne

Welcome to Mövenpick Hotel Melbourne on Spencer, Accor's 2nd Mövenpick Hotel in Australia. Forming the 'podium' of Melbourne's iconic Premier Tower, our hotel's 172 luxury hotel rooms and suites cover floors 1 to 6, The 5-star boutique Mövenpick Hotel Melbourne on Spencer delivers a hotel experience that blurs the lines between art and design. Book Today!

---



160 Spencer Street, Melbourne  
Reservations 03 9600 5400  
[hb6l9@movenpick.com](mailto:hb6l9@movenpick.com)

## Novotel Melbourne on Collins

You will be greeted by Novotel Melbourne on Collins, in the heart of Melbourne, offering you a contemporary style and 4.5-star comfort. The most unique shopping destination in Melbourne, it is located on fashionable Collins Street, directly above the fashionable St. Collins Lane. The hotel is situated close to Rod Laver Arena, MCG, Federation Square, Princess, and Regent Theatres in the heart of Melbourne City. Melbourne accommodation must be available on the doorstep of all these cosmopolitan cities.

---

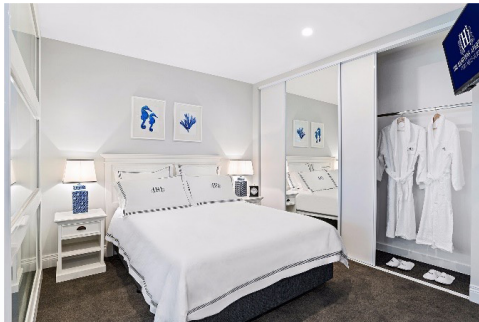


270 Collins Street Melbourne  
Reservations 03 9667 5800  
[H1587@accor.com](mailto:H1587@accor.com)

# The Hamptons Apartments

Hamptons Apartments offers short- and long-term accommodation in the coastal suburbs of St Kilda and Port Melbourne and is conveniently located in Melbourne's CBD. We offer luxury Hamptons-style studio, 1- and 2-bedroom hotel apartments. From the moment you walk in, our interior designers have worked tirelessly to take you from the streets of Melbourne's coastal suburbs to the luxurious Hamptons coastline.

---

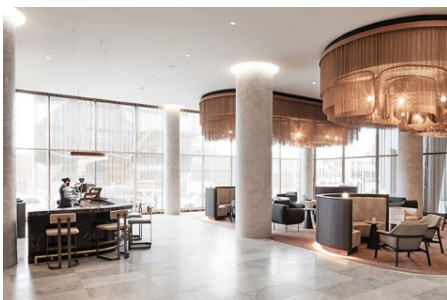


45 Nott Street, Port Melbourne  
Local pick up may be available on request  
Reservations 1300 426 786  
[portmelbourne@thehamptonsapartments.com.au](mailto:portmelbourne@thehamptonsapartments.com.au)

# Oakwood Premier Melbourne

Keeping corporate travellers in mind, the property features various business amenities such as a conducive co-working space, four flexible boardrooms and a ballroom for meetings and events. Set within a 40-storey tower, the property boasts 132 luxurious hotel rooms and 260 serviced apartments, styled, and furnished with state-of-the-art in-room technology that caters to the modern traveller. A large fitness centre with games room, resident's lounge and multiple outdoor areas that overlook the city, Port Phillip Bay and surrounding suburbs is also located here.

---



202 Normanby Road, Southbank  
Reservations 03 9087 3400  
[res.premier-melbourne@oakwood.com](mailto:res.premier-melbourne@oakwood.com)

As a valued customer of Fuso Port Melbourne, we are offering free transportation to your choice of the hotels in the booklet.

**Please see reception to organise transport.**

# Restaurants

There is a large array of local restaurants/cafes in the surrounding area.  
Transportation available on request - see reception to organise (subject to availability).

## Ciao Cielo

115 Bay Street, Port Melbourne  
(03) 9646 7697  
ciaocielo.com.au

Italian Restaurant  
Dine-in • Takeaway • Delivery

---

Monday	5:00pm - 9:30pm
Tuesday	12:00pm - 10:00pm
Wednesday	12:00pm - 10:00pm
Thursday	12:00pm - 10:00pm
Friday	12:00pm - 10:00pm
Saturday	12:00pm - 10:00pm
Sunday	12:00pm - 10:00pm

## Thai Thani Docklands

3/851 Collins Street, Docklands  
(03) 9620 3452  
doordash.com

Restaurant  
Dine-in • Takeaway • Delivery

---

Monday	11:30am - 9:00pm
Tuesday	11:30am - 9:00pm
Wednesday	11:30am - 9:00pm
Thursday	11:30am - 9:00pm
Friday	11:30am - 9:00pm
Saturday	11:30am - 9:00pm
Sunday	11:30am - 9:00pm

# Chilangos Mexican Cantina

855 Collins Street, Docklands  
(03) 9112 9450  
resmio.com

Mexican Restaurant  
Dine-in • Takeaway • Delivery

---

Monday	11:00am - 3:00pm
Tuesday	11:00am - 3:00pm
Wednesday	11:00am - 3:00pm
Thursday	11:00am - 3:00pm
Friday	11:00am - 3:00pm
Saturday	Closed
Sunday	Closed

# Mr Hobson

9 Waterfront Place, Port Melbourne  
(03) 9646 6299  
mrhobson.com.au

Restuarant  
Dine-in • Kerbside Pick-up • Delivery

---

Monday	8:00am - 3:00pm
Tuesday	8:00am - 3:00pm
Wednesday	8:00am - 3:00pm
Thursday	8:00am - 3:00pm
Friday	8:00am - 3:00pm
Saturday	8:00am - 3:00pm
Sunday	8:00am - 3:00pm

# Grey and Bliss Cade

197 Bay Street, Port Melbourne  
(03) 9646 9989  
greyandbliss.com.au

Cafe  
Dine-in • Takeaway

---

Monday	7:00am - 4:00pm
Tuesday	7:00am - 4:00pm
Wednesday	7:00am - 4:00pm
Thursday	7:00am - 4:00pm
Friday	7:00am - 4:00pm
Saturday	8:00am - 4:00pm
Sunday	8:00am - 4:00pm

# Creme Port Melbourne

70 Bay Street, Port Melbourne  
(02) 9792 6060  
hungryhungry.com

Cafe  
Dine-in • Takeaway • Delivery

---

Monday	6:00am - 4:00pm
Tuesday	6:00am - 4:00pm
Wednesday	6:00am - 4:00pm
Thursday	6:00am - 4:00pm
Friday	6:00am - 4:00pm
Saturday	6:00am - 4:00pm
Sunday	6:00am - 4:00pm



# Shopping

## DFO South Wharf

20 Convention Centre Place, South Wharf  
(03) 9099 1111

---

Monday	10:00am - 6:00pm
Tuesday	10:00am - 6:00pm
Wednesday	10:00am - 6:00pm
Thursday	10:00am - 6:00pm
Friday	10:00am - 6:00pm
Saturday	10:00am - 6:00pm
Sunday	10:00am - 6:00pm

## Melbourne Central

Cnr LaTrobe and Swanston Streets, Melbourne  
(03) 9922 1122

---

Monday	10:00am - 7:00pm
Tuesday	10:00am - 7:00pm
Wednesday	10:00am - 7:00pm
Thursday	10:00am - 9:00pm
Friday	10:00am - 9:00pm
Saturday	10:00am - 7:00pm
Sunday	10:00am - 7:00pm

# Local Attractions

## SEA LIFE Melbourne Aquarium

King Street, Melbourne  
[info@melbourneaquarium.com.au](mailto:info@melbourneaquarium.com.au)

---

Sea Life Melbourne Aquarium is an aquarium for the Southern Ocean and Antarctica in central Melbourne, Australia. It's right in front of the Flinders Street Viaduct and across King Street Bridge on the Yara River.

## Luna Park Melbourne

18 Lower Esplanade, St Kilda  
(03) 9525 5033

Open Monday to Friday 9:00am - 5:00pm

---

Enduring amusement park known for its perimeter roller coaster and giant, ornate carousel.

## Melbourne Skydeck

7 Riverside Quay, Southbank  
(03) 9693 8888

Open Monday to Thursday 12:00pm - 9:00pm, Friday & Saturday 12:00pm - 10:00pm

---

Gold-plated observation deck on the 88th floor with panoramic city views & a protruding glass cube

# Car Hire

If you require a car while your vehicle is being repaired,  
there are car hire companies nearby.

## SIXT Car & Truck Rental Melbourne

10 Southern Cross Station, Docklands  
(03) 8661 6000  
[sixt.com.au](http://sixt.com.au)

---

Monday	7:30am - 4:00pm
Tuesday	7:30am - 4:00pm
Wednesday	7:30am - 4:00pm
Thursday	7:30am - 4:00pm
Friday	7:30am - 4:00pm
Saturday	7:30am - 4:00pm
Sunday	7:30am - 4:00pm

**Thank you for visiting Fuso Port Melbourne**

We hope to see you again soon



